

COVERS ALL YOUR NEEDS

INDUSTRY AND CONSTRUCTION



ENGLISH



SHELTERALL® CONCEPT

SHELTERALL® is a metal-textile construction that is modular and quick to assemble. It meets the storage and shelter needs of professionals in the Industry, Building & Construction, Environment and Local Authority sectors.



COST-EFFECTIVE



STRONG



MODULAR



FOUNDATION-FREE



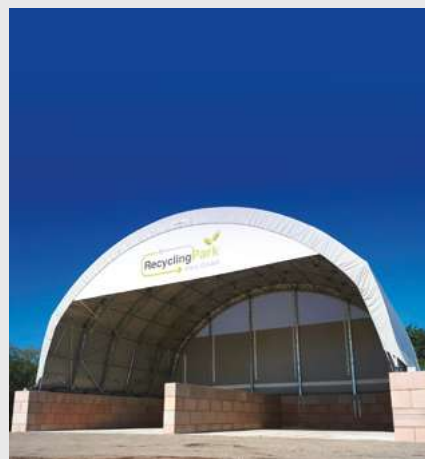
QUICK
INSTALLATION

A WIDE PRODUCT RANGE FOR EVERY APPLICATIONS

CONSTRUCTION



ENVIRONMENT



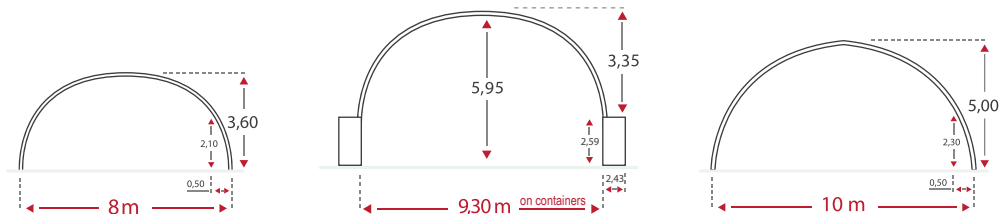
INDUSTRY



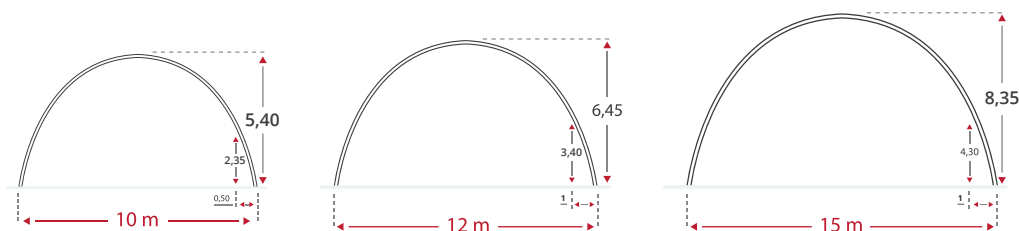
SIMPLE ARCH



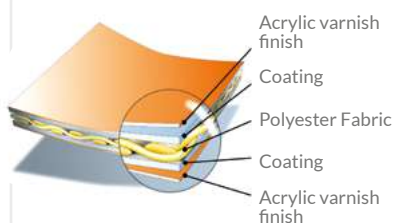
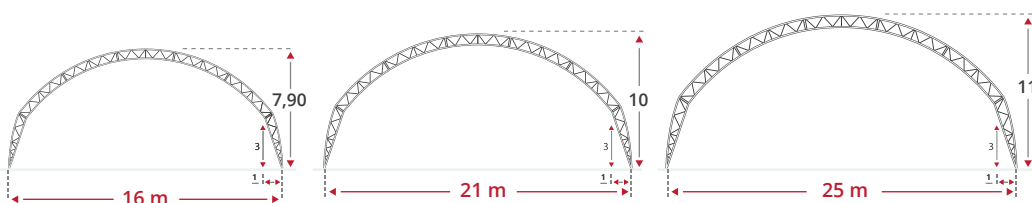
OV90



OV130



TRUSS ARCH

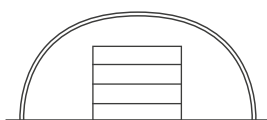


Our polyethylene coated canvas coverings offer mechanical strength against climatic conditions. Waterproof and UV-protected, they are guaranteed for 10 years*.

Available colours: ☐ White ☐ Beige ☒ Green/white ☐ Grey/white

KEY OPTIONS

GABLES

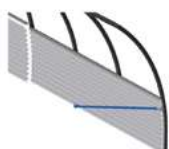


Automatic door gable

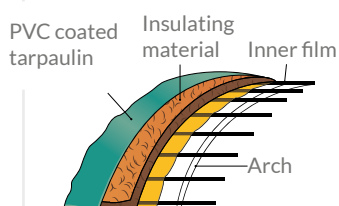


Customisable gables

SIDE PROTECTION STEEL-SHEETING



INSULATION



ANCHORING



Asphalt Soil
or backfill



Concrete soil or
Toutabloc® blocks

CERTIFICATIONS

Shelterall® is designed and manufactured according to the highest standards and regulations. We have chosen renowned certification bodies to ensure guaranteed quality for our customers. Every Shelterall® is designed according to the Building Eurocodes standards in partnership with regulatory bodies in France and abroad. Our ISO 9001 continual improvement approach strengthens our development and innovation so that we can better meet our customers' needs.



INDUSTRIAL PRODUCTION SITE, EYGALIÈRES FRANCE

The RICHEL GROUP® designs, manufactures and develops comprehensive greenhouse and metal-textile shelter solutions for agriculture, construction and industry all over the world.

Its expertise has enabled it to develop for 20 years in other activities that have become essential for the group, such as storage solutions represented by the SHELTERALL® (storage shelters) and TOUTABLOC® (concrete block walls and huts) brands.

www.shelterall.eu